

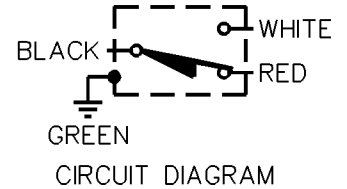
**MICRO SWITCH**  
a Honeywell Division

FED. MFG. CODE 91929

**MINIATURE PRECISION  
LIMIT SWITCH**

CATALOG LISTING

**914CE18-3**



914CE18-3

**M**

DRAWING  
NUMBER

3

ISSUE

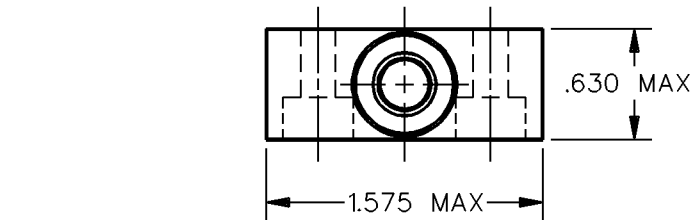
RELEASE NO. PR-6431-T REPLACES

CHECK

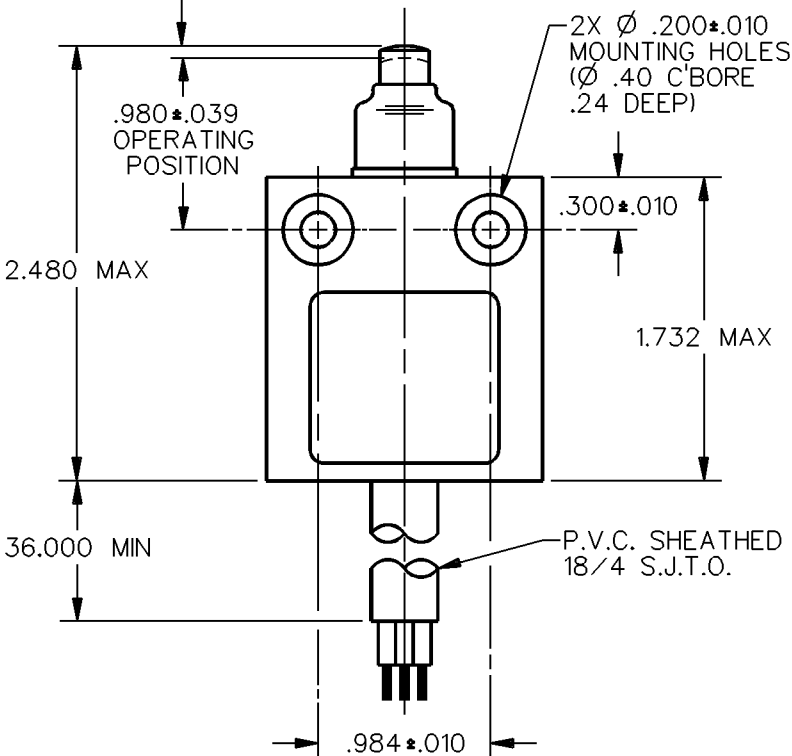
REVISIONS

A	CO-69061
S A V	4 OCT 91

CHECK



.071 MAX  
PRETRAVEL



Ø.280 STAINLESS  
STEEL PLUNGER

NEOPRENE  
SEAL

2X Ø .200 ± .010  
MOUNTING HOLES  
(Ø .40 C'BORE  
.24 DEEP)

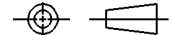
P.V.C. SHEATHED CABLE  
18/4 S.J.T.O.



NOTES  
1 - ZINC HOUSING FINISHED WITH GRAY PAINT

ANSI Y14.5M-1982 APPLIES

THIS DRAWING COVERS A PROPRIETARY ITEM AND IS THE PROPERTY OF MICRO SWITCH, A DIVISION OF HONEYWELL. THIS DRAWING IS NOT TO BE COPIED OR USED WITHOUT THE APPROVAL OF MICRO SWITCH.

THIRD ANGLE PROJECTION



CHARACTERISTICS	ELECTRICAL DATA	SCALE	
		FULL	DO NOT SCALE PRINT
OPERATING FORCE — — — — 5 LB MAX	CONTACT ARRANGEMENT S P D T	<b>UNLESS OTHERWISE SPECIFIED TOLERANCES ARE</b>	
DIFFERENTIAL TRAVEL — — — .004 MAX		ONE PLACE (.0) ± .030	
OVERTRAVEL — — — — .118 MIN	5A 1/10HP 125 OR 250 VAC	TWO PLACE (.00) ± .015	
	 	THREE PLACE (.000) ± .005	
		ANGLES ±	
		WEIGHT	

DDM/CAD

DRAWN

CHECK

S A V 4 OCT 91